

- Legend**
- Garden Metal Shed
 - 750mm high galvanised steel railing to front of dwellings
 - 1.8m high blockwork wall or Closeboard fence along third party boundary
 - Low level retaining wall (approx 0.5m) with 1.65m closeboard fence over
 - 1.65m closeboard fence
 - 900mm high stone wall along entrance and open space areas
 - 2m high Paladin fence around pumping station
 - Footpath (Dished at entrance)
 - Tactile paving at crossing point
 - Roadways
 - Paving
 - Grass Areas
 - Gravelled Areas
 - Trees and shrubs
 - Watermain
 - Line of Storm sewer
 - SMH9 Storm Manhole
 - Line of Foul sewer
 - FMH9 Foul Manhole
- A variation of + or - 0.5m to be allowed for in the noted finished floor levels to compensate for any unforeseen ground conditions etc.

- House Type Legend**
- HT3 House Type 3 (2 Bed)
 - HT6 House Type 6 (3 Bed)
 - HT23 House Type 23 (3 Bed)
 - HT7 House Type 7 (3 Bed)
 - HT18 House Type 18 (4 Bed)
 - HT21 Apartment Type 21 (2 x 2 Bed)
 - HT19 House Type 19 (4 x 2 Bed Apts)
 - HT22 House Type 22 (Special Needs House 6 Bed)

Revisions

Rev:	Date:	Details:
C	13.07.20	Revised for Part 8 Application
B	07.07.20	Revised as per RSA
A	26.05.20	Revised for Traffic Audit - Footpath added & internal junction staggered

Donegal County Council
Architects Office

Comhairle Contae Dhún na nGall
Donegal County Council

DCC Tel: 074 91 53900 DCC Fax: 074 91 72812

Part 8 SUBMISSION

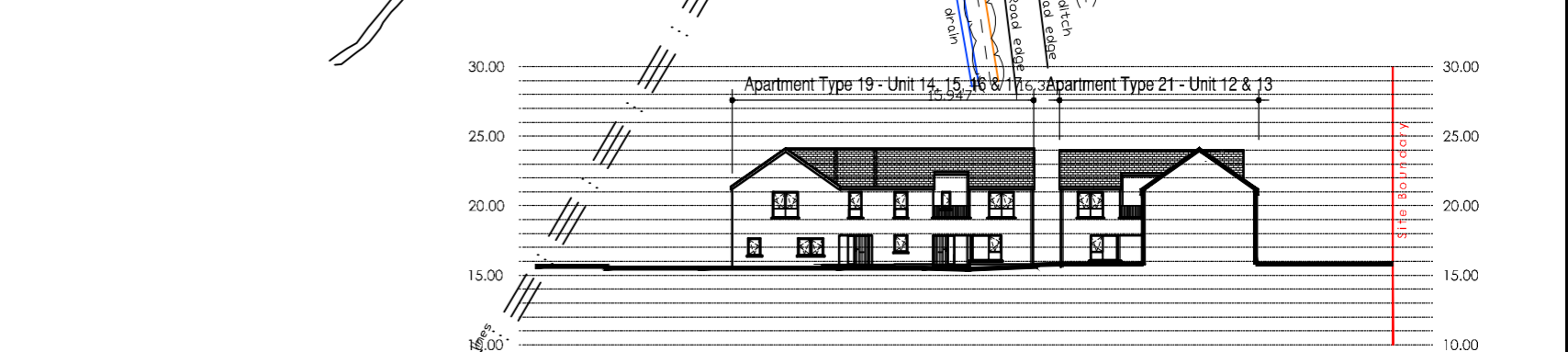
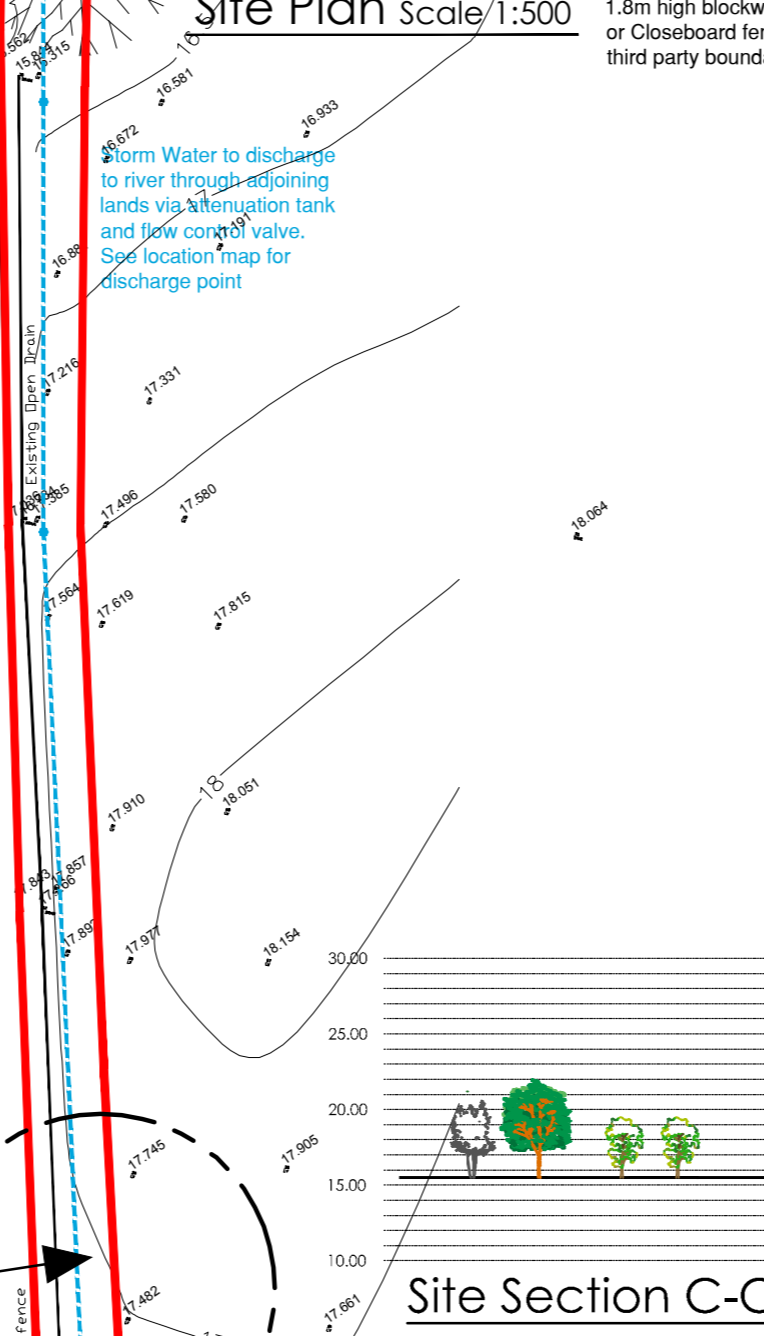
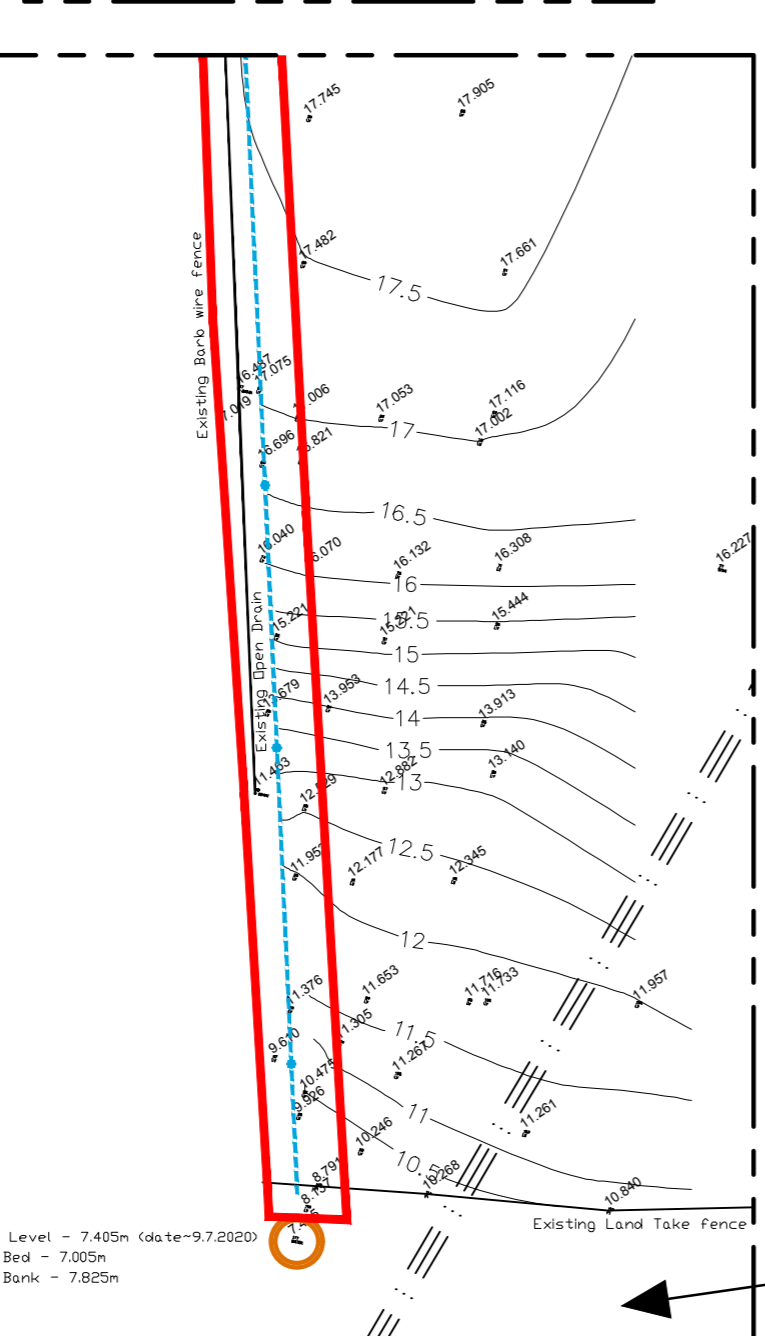
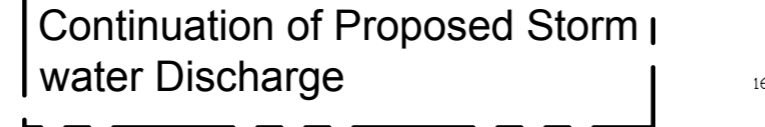
Project:
Proposed Housing Development at Drumacrin, Bundoran, Co. Donegal.

Drawing Title:
Proposed Site Layout Site Sections

Drawing No: S2-03 C

Date: 26/02/20 Scale: As Shown @ A1

Drawn by: TQ Job No: HCD 01 18



Schedule of Accommodation:

2 Bedroom Apartments	20No.
2 Bed Dwellings	11No.
3 Bed Dwellings	10No.
4 Bed Dwellings	3No.
6 Bed Dwelling	1No.
Total:	45 No. Units

Car Parking Requirement:
70 no. Car Park spaces required (74 no. provided)

All Planter Shrubs: (mixture of the following)
Choiysa Tamata, cp. 3lt 40 - 50cm
Cistus x Purpureus, cp. 2lt 30 - 40cm
Perovskia Atroplicifolia 'Blue Spire', cp. 2lt 30 - 40cm
Viburnum Davidii, cp. 3lt 30 - 40cm

Garden Trees:
1no. Betulus Papyrifera, Br. 8 - 10cm gt.
1no. Crataegus Prunifolia, Br. 8 - 10cm gt.

Garden Trees:
2no. Betulus Pendula, Br. 8 - 10cm gt.
1no. Crataegus Prunifolia, Br. 8 - 10cm gt.
2no. Sorbus Aucuparia, Br. 8 - 10cm gt.

Garden Trees:
2no. Crataegus Prunifolia, Br. 8 - 10cm gt.